

WOLF RAILING

GATE KIT* ASSEMBLY INSTRUCTIONS

Local building codes and principles should always be adhered to when installing Wolf Railing. All installations are unique and the sole responsibility of the installer to determine specific requirements for each application. Wolf claims no liability or responsibility for the improper installation of this product. Wolf recommends that all designs be reviewed by a licensed engineer, architect, and/or local building inspector before installation.

Gate should measure between 1 3/4" - 2" less than the finished post to finished post opening measurement.

STEP 1 - These are simplified instructions for installing a Wolf Railing gate kit. More detailed information is included in each package of hinges and latches and should be referred to for additional notes and maintenance information.

STEP 2 - Determine the location you would like to install hinges. Centering the hinges on the rails will work in most cases, but confirm for your particular application. Attach hinges to gate ensuring the tension adjusting screws are facing up. For each hinge, install 3 of the supplied screws on the face of the hinge.

STEP 3 - For each hinge, install 2 supplied screws on the side of the hinge.

STEP 4 - Use two 3 1/2" spacer blocks (for standard 36" top rail height) to set the gate at the proper height.

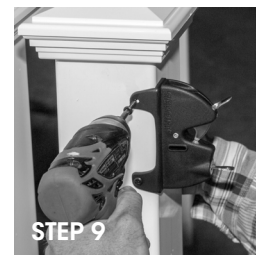
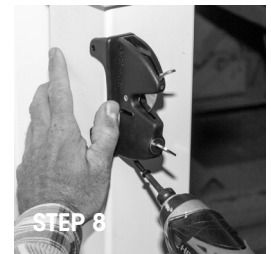
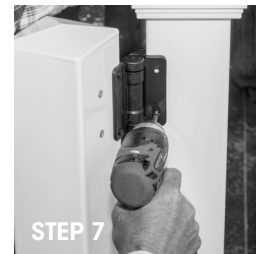
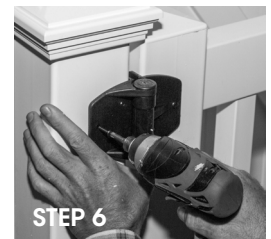
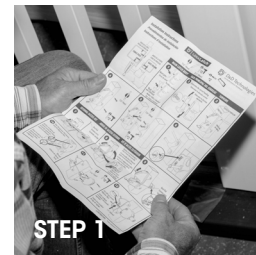
STEP 5 - Check to be sure your gate is at the height you would like it.

STEP 6 - Hold hinges snugly against the face and side of the post corner. For each hinge, install 3 of the supplied screws on the face of the hinge.

STEP 7 - Open gate and for each hinge, install 2 supplied screws on the side of the hinge.

STEP 8 - Determine your preferred location for the latch and install 2 of the supplied screws into the face of the latch.

STEP 9 - Install 2 screws into the side of the latch.



WOLF HOME PRODUCTS*

WOLF RAILING

STEP 10 - Hold the latch peg snugly against the corner of the gate in the closed latch position and install 2 screws into the face of the latch peg at approximately the center of the slots.

STEP 11 - Install 2 screws into the side of the latch peg at approximately the center of the slots.

STEP 12 - Adjust the top and bottom hinge tensioner by tightening or loosening the screw on top to achieve your desired speed and strength of gate closing.

STEP 13 - Latch peg can be adjusted as up or down as needed by loosening the screws enough to slide into position and retightening the screws.

STEP 14 - *Welded gates install using the same process but the spacer blocks may be a different height.

