

# INSTALLATION GUIDE



**WOLF** HOME PRODUCTS®

OUTDOOR  
CABINETRY

**WOLF** ENDURANCE



# BEFORE YOU BEGIN

## IMPORTANT NOTES

---

- Always wear gloves and safety glasses when handling and installing aluminum cabinetry.
- Patio surfaces are typically uneven and may incorporate slope for water drainage. Wolf Endurance cabinets have been designed with that in mind. A run of cabinets can adjust up to 1" to accommodate these variations.
- Leveling and squaring cabinets is critical to the function of your cabinets. Failure to do so will result in improper closure of doors and drawers.
- Drawer assemblies and doors are made to be removable to aid in installation.

## RECOMMENDED TOOLS

---

- |                    |                                       |   |
|--------------------|---------------------------------------|---|
| • Safety glasses   | • #10 x .75" long self-tapping screws | • Chop or miter saw (some applications)       |
| • Gloves           | • Clamps (C or quick clamp)           | • Hole cutter or hole saw (some applications) |
| • Tape measure     | • Jigsaw                              | • Isopropyl alcohol                           |
| • 48" Bubble level | • Carpenters square                   |   |
| • Screw gun        |                                       |   |

## LAYOUT AND PLAN THE INSTALLATION

---

- Before you begin installation, unpack and inspect your cabinetry. Be sure that you have all of the components necessary to complete your installation. Packaging may be utilized later to protect finished surfaces during installation.
- Mock up cabinets as they are intended to be installed.

## INSTALLATION GUIDE:

---

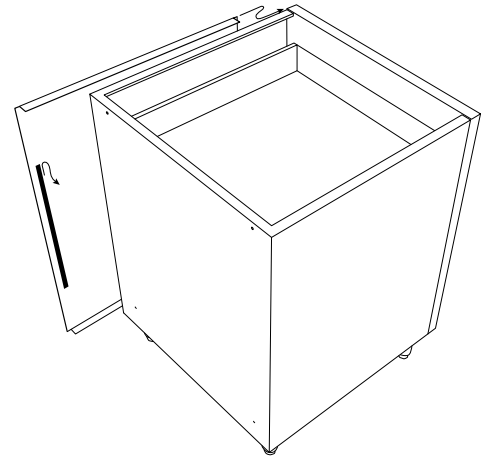
Islands .....	3-4	Mobile Base .....	8-10	Insert Cabinets.....	15-16
Permanent Wall Runs.....	5-6	Toe Kick .....	11-12	Aluminum Countertop.....	17-18
Grill Base Cabinet .....	7	Column Fillers.....	13-14	Warranty.....	19

# INSTALLATION: ISLANDS

## INSTALL FINISHED SIDES

---

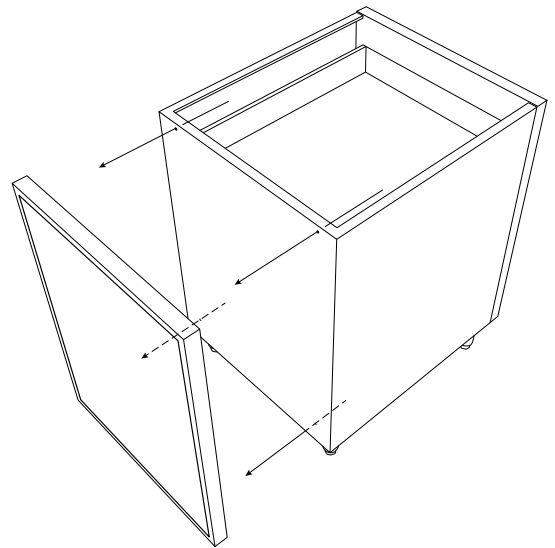
- Exposed side of cabinets require the installation of a finished side panel. Slide the front edge of the side panel into the cavity between the face frame and the cabinet wall until the rear of the side panel is flush with the rear of the cabinet. Remove backing on the adhesive and apply pressure to permanently secure the side panel in place.
- NOTE:** Cleaning the raw aluminum with isopropyl alcohol before attaching side panel is recommended.



## ATTACH BACK PANELS

---

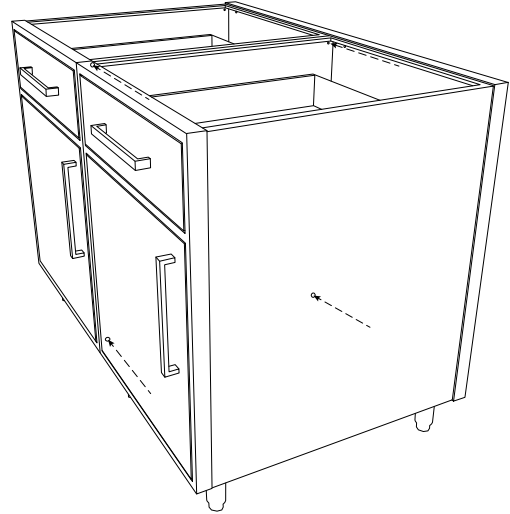
- Cabinets require back panels unless they are permanently installed to a wall or similar structure. The back panels slip over the rear of the cabinet assemblies.
- If a cabinet has a finished end panel, it also will be installed inside of the back panel. Using (4) .75" long self-tapping screws, attach the back panel to the cabinet. Attach the top, inside through the holes provided. Attach the bottom by screwing up, through the frame into the cabinet assembly.



# INSTALLATION: ISLANDS

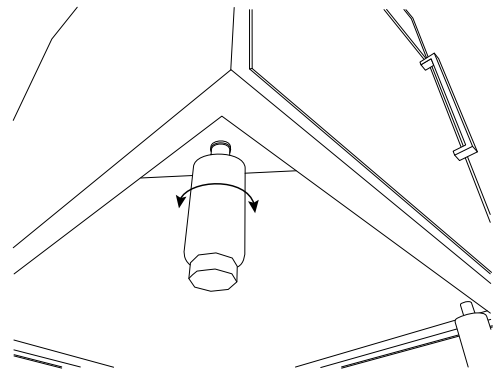
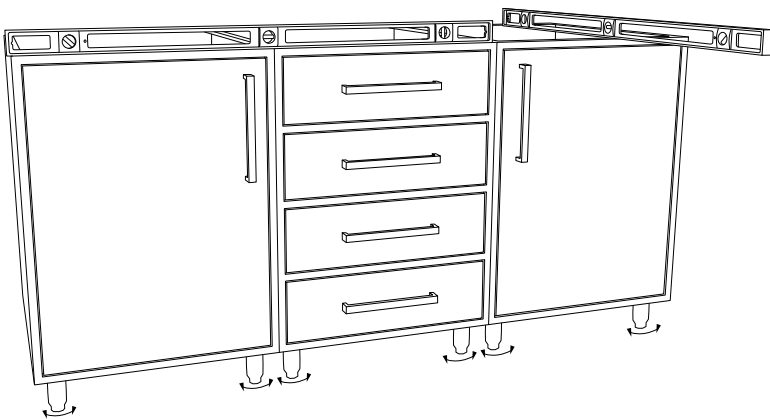
## ATTACH CABINETS TOGETHER

- Align front and top faces of your cabinetry.  
Use (2) clamps to hold cabinets in place.
- Screw the cabinet fronts together using .75" long self-tapping screws. Holes are located top and bottom.
- Remove clamps. Adjust alignment at the rear of the cabinets as necessary before screwing the backs together through the predetermined holes.



## LEVEL CABINET RUN

- Leveling your cabinets is absolutely critical to the fit and function of the products. Use a bubble level front to back and left to right.
- The adjustable legs allow for 1" of variation in a run. The bottom portion of the leg can be threaded in or out to adjust. Be sure that all feet are in contact with the ground.

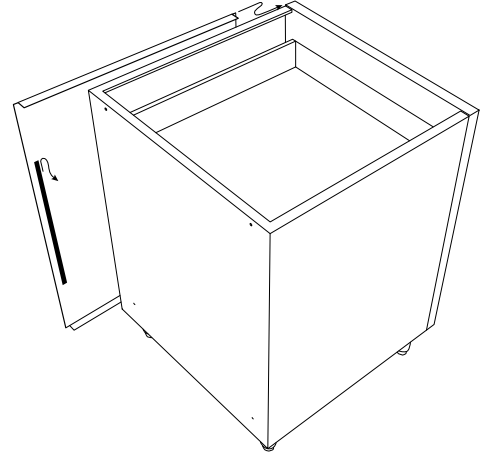


# INSTALLATION: PERMANENT WALL RUNS

## INSTALL FINISHED SIDES

---

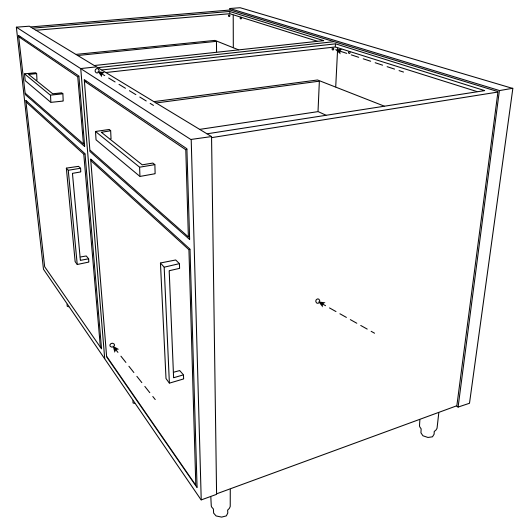
- Exposed side of cabinets require the installation of a finished side panel. Slide the front edge of the side panel into the cavity between the face frame and the cabinet wall until the rear of the side panel is flush with the rear of the cabinet. Remove backing on the adhesive and apply pressure to permanently secure the side panel in place.
- NOTE:** Cleaning the raw aluminum with isopropyl alcohol before attaching side panel is recommended.



## ATTACH CABINETS TOGETHER

---

- Align front and top faces of your cabinetry. Use (2) clamps to hold cabinets in place.
- Screw the cabinet fronts together using .75" long self-tapping screws. Holes are located top and bottom.
- Remove clamps. Adjust alignment at the rear of the cabinets as necessary before screwing the backs together through the predetermined holes.



# INSTALLATION: PERMANENT WALL RUNS

## SET CABINET RUN IN PLACE

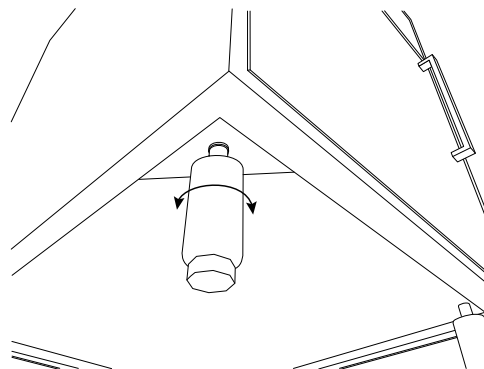
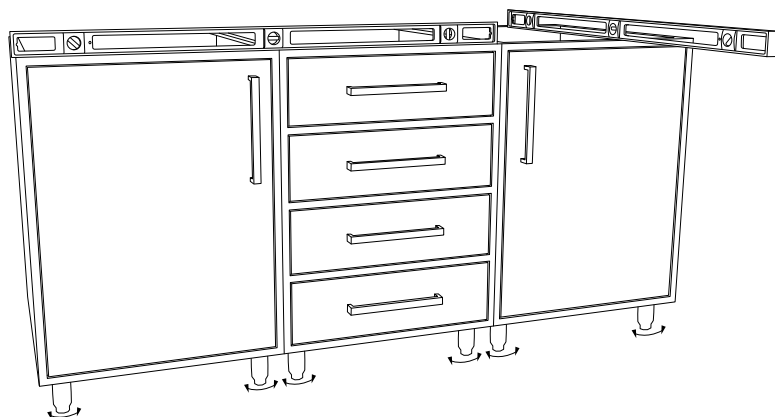
---

- Slide cabinets into place. Maintain gap spacing between cabinets (front to rear) .

## LEVEL CABINET RUN

---

- Leveling your cabinets is absolutely critical to the fit and function of the products. Use a bubble level front to back and left to right.
- The adjustable legs allow for 1" of variation in a run. The bottom portion of the leg can be threaded in or out to adjust. Be sure that all feet are in contact with the ground.



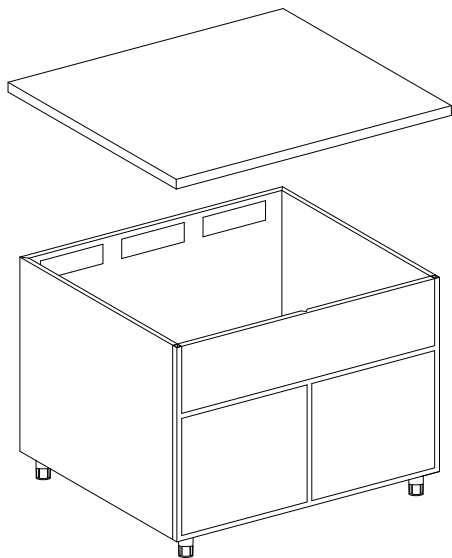
## ATTACH CABINETS TO WALL

---

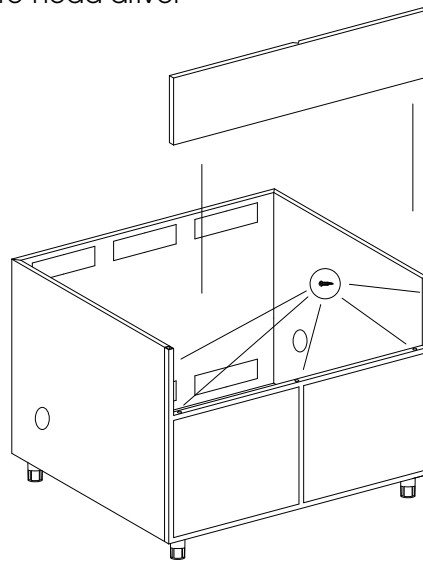
- Cabinets can be fastened to walls using the proper hardware to attach to your specific wall material. The rear wall of your cabinets have (2) pre-determined holes to assist in attaching them to your wall. Your wall may require the drilling of new holes to hit studs or other structural elements specific to your installation.
- Shimming all attachment points will be required. It is critical to the functionality of the cabinets that they remain square after install.
- Confirm cabinets are square and level.

# INSTALLATION: GRILL BASE CABINET

**IMPORTANT:** Countertop thickness needs considered prior to cutting the grill opening.



**It is recommended the cabinet front be removed for cutting.** Remove 5 sheet metal screws from inside of cabinet using a #2 square-head driver



## CUT-OUT GRILL OPENING

**NOTE:** Do not cut cabinet corners or joists as this will alter the structural integrity and strength of the cabinet. Proper eye and hand protection is a must. Consult grill manufacturer's cut out specifications.

### 1. Mask off the cutting area

*TIP:* To protect from the cutting tool scratching the front, mask the entire area that will not be cut out

### 2. Using a square, draw your cut locations onto the masked area

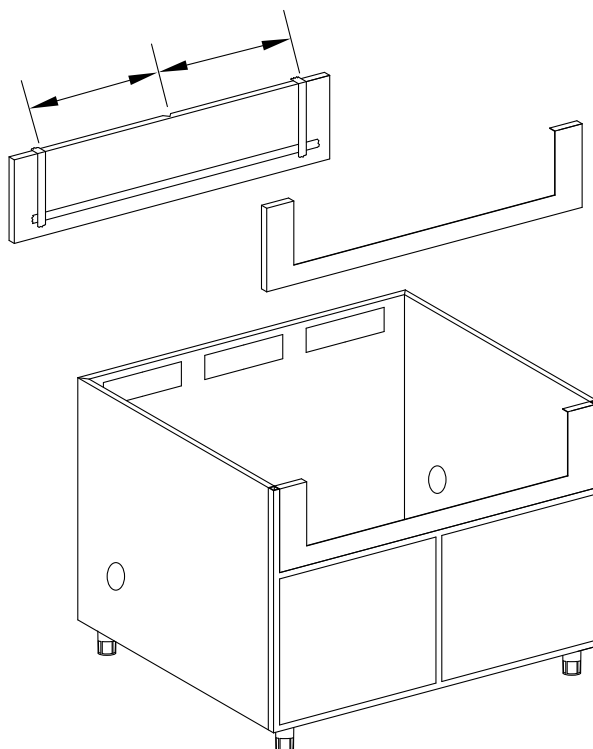
*TIP:* The center notch is helpful when locating drawing your cut-out

### 3. With the front piece secured, cut out grill location using a jigsaw with a fine tooth metal blade

### 4. Remove burs and sharp edges with file or sand paper

### 5. Touch-up paint as needed

### 6. Reinstall front piece

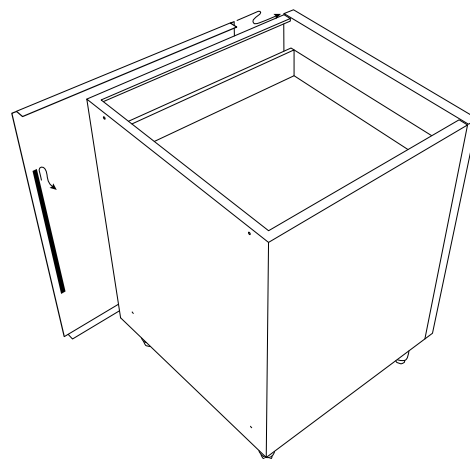


# INSTALLATION: MOBILE BASE

## INSTALL FINISHED SIDES

---

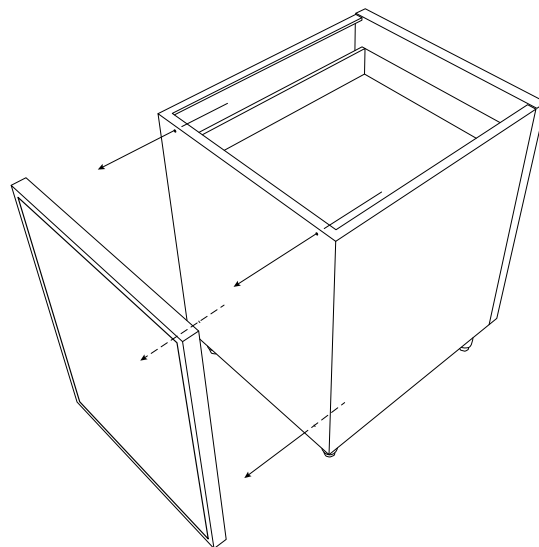
- Exposed side of cabinets require the installation of a finished side panel. Slide the front edge of the side panel into the cavity between the face frame and the cabinet wall until the rear of the side panel is flush with the rear of the cabinet. Remove backing on the adhesive and apply pressure to permanently secure the side panel in place.
- NOTE:** Cleaning the raw aluminum with isopropyl alcohol before attaching side panel is recommended.



## ATTACH BACK PANELS

---

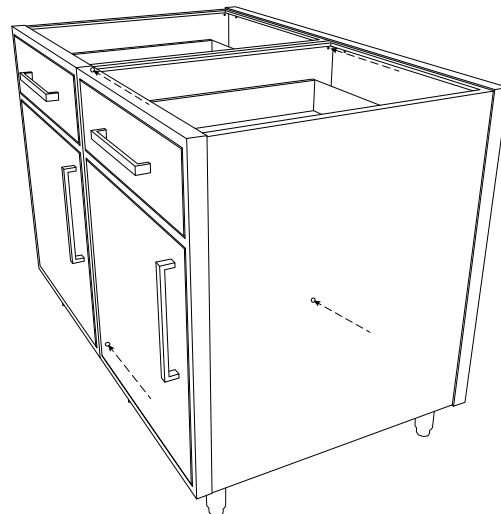
- Cabinets require back panels unless they are permanently installed to a wall or similar structure. The back panels slip over the rear of the cabinet assemblies.
- If a cabinet has a finished end panel, it also will be installed inside of the back panel. Using (4) .75" long self-tapping screws, attach the back panel to the cabinet. Attach the top, inside through the holes provided. Attach the bottom by screwing up, through the frame into the cabinet assembly.



# INSTALLATION: MOBILE BASE

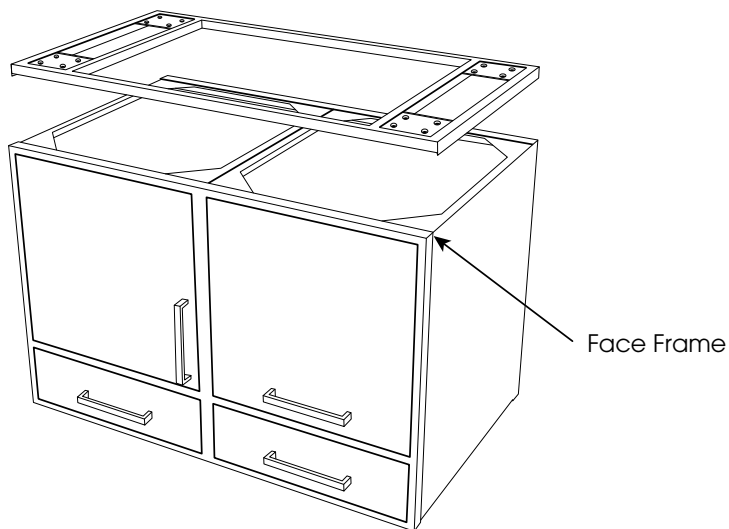
## ATTACH CABINETS TOGETHER

- Prior to screwing cabinets together, make sure faces of cabinets are flush and aligned with one another
- Screw cabinets together using .75" long self tapping screws. Holes are located at top of cabinet

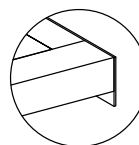


## INSTALL MOBILE BASE

- With cabinets in correct order, flip the cabinets upside down on a protected surface, making sure the cabinets are against each other
- Position the Mobile Base onto cabinets.
- **NOTE:** Lip of mobile base will be located right behind face frame



- Mobile Base lip is used to capture the cabinets. This may be a tight fit and require clamps to help hold the cabinets firmly together

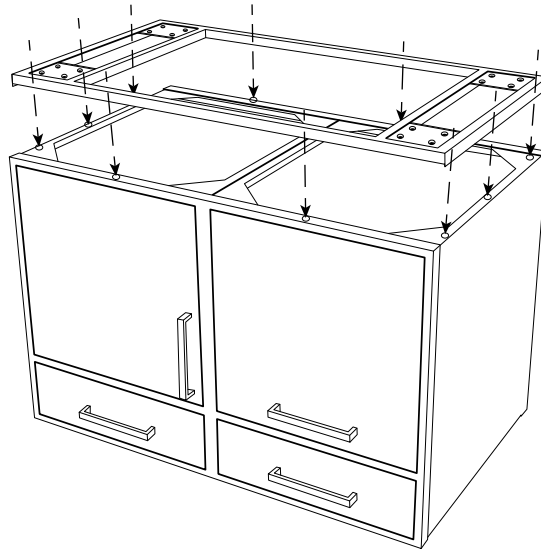


Mobile Base Lip faces bottom of cabinets

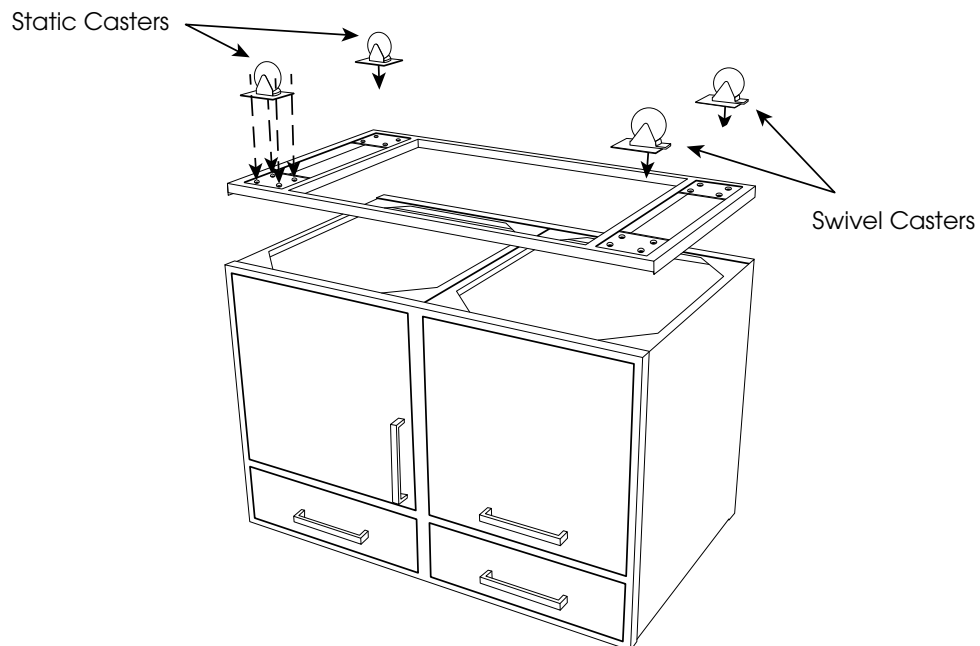
# INSTALLATION: MOBILE BASE

## INSTALL MOBILE BASE

- Once the Mobile Base is in place, install self-tapping screws through front, back and end clearance holes



- Install caster onto mobile base using hardware provided



# INSTALLATION: TOE KICK

## CABINET INSTALLATION - TOE KICKS

The toe kick is specially designed to allow for up to 1" of variation in the floor. Beyond that, customers may order in addition to the toe kick, a custom made filler. Toe kicks may require cutting to fit specific layouts.

**NOTE:** Predrilled holes are not for installation (used in manufacturing process).

For islands with toe kicks on multiple sides, start with the front of the kitchen.

### FRONT AND REAR TOE KICKS

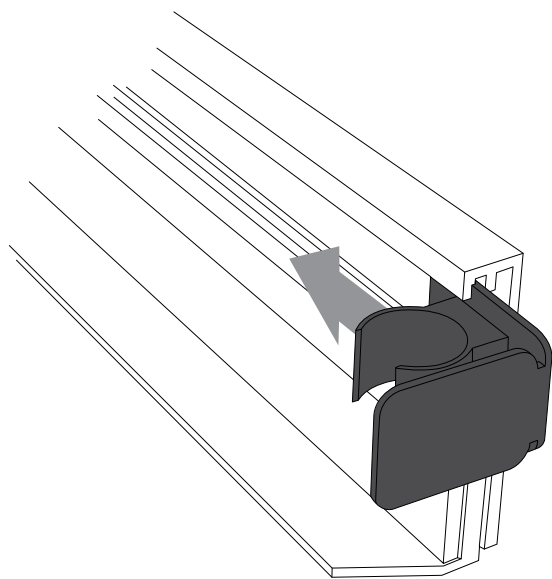
The toe kick should be cut .375" less than the length of the run per return.

- a. Example:** 96" run of cabinets that has toe kick on *front, left & right sides* would need a 95.25" toe kick for front.

i.  $96 - .375 - .375 = 95.25$

- b. Example:** 96" run of cabinets that has toe kick on *front and left side* would need a 95.625" toe kick for front.

i.  $96 - .375 = 95.625$



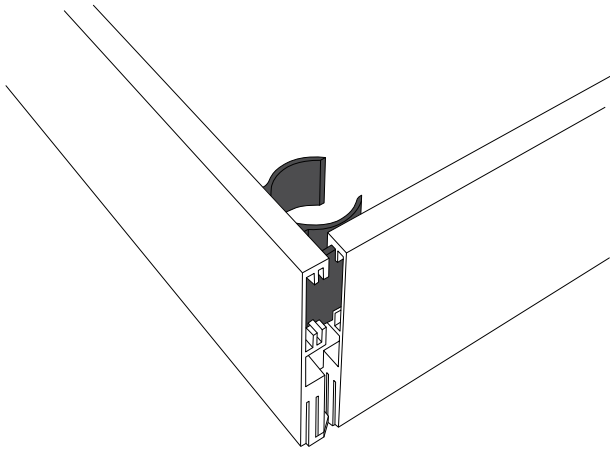
1. Measure, mark, and cut the toe kick to the desired length. (See above)
2. Slide the provided leg clip brackets into the channels in the back of the toe kick. We recommend using 4 brackets in an 8' run.  
\*\*\*Note that the two end brackets will be used to support the *return* toe kick. The clip bracket should be as shown.
3. Clip the toe kick assembly into place on the stainless steel legs. All pieces of toe kick must have at least two points of contact with run of cabinets.
4. If your kitchen requires a toe kick on the rear side of the layout, repeat the steps above on the rear of the kitchen.

# INSTALLATION: TOE KICK

## RETURNS (SIDES)

The toe kick return should be cut 1.25" less than the depth of the cabinets when there is no rear toe kick, and 2.5" less if there is.

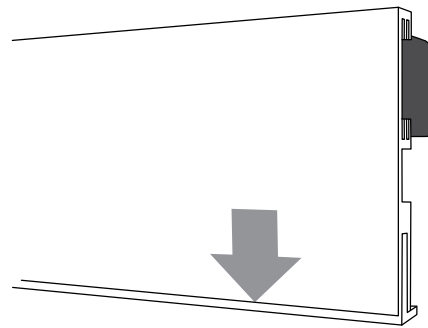
- a. Example:** 28" deep cabinets that have toe kicks on *front, side(s), and rear* would need a 25.5" toe kick for left or right side. **i.**  $28 - 2.5 = 25.5$
- b. Example:** 28" deep cabinets that have toe kicks on *front, and side(s)* would need a 26.75" toe kick for left or right side. **i.**  $28 - 1.25 = 26.75$



- 1.** Measure, mark, and cut the toe kick to the desired length. (See above)
- 2.** A toe kick return can be mounted to the kitchen using the same bracket that holds the end of the front and/or rear toe kick. If required a single bracket can be utilized on end of toe kick.

## FASCIA SKIRT

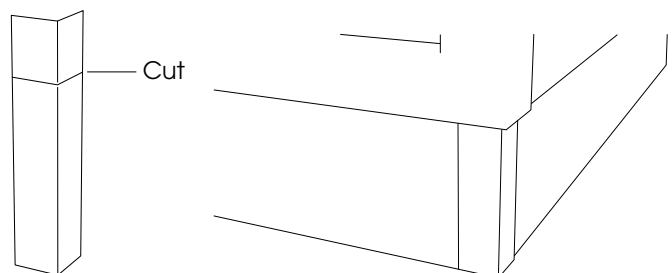
- 1.** Remove the tape that holds the fascia skirt in place for shipping. Fascia skirt is used to hide any variation in elevation due to floor slope.



## CORNER COVER

The corner cover pieces will be manufactured in 12" pieces as shown below and need to be cut to length.

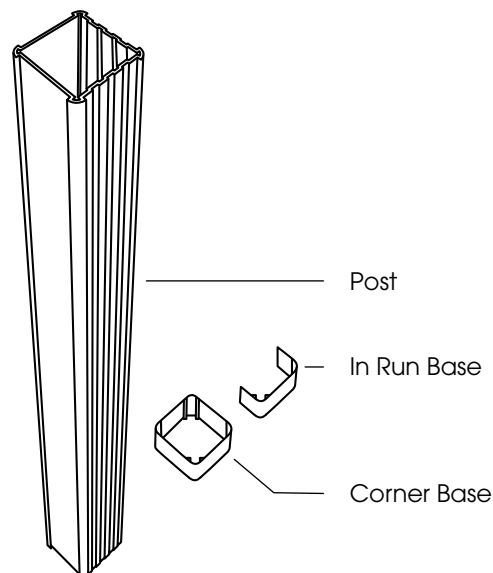
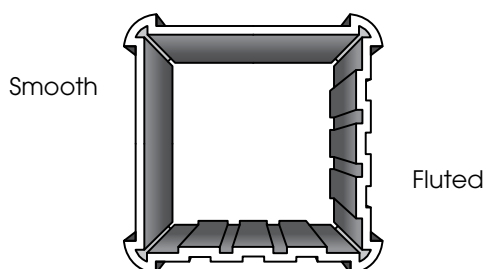
- 1.** Measure from the floor, to the top of the toe kick. Cut the corner cover to length.
- 2.** Remove the adhesive backing and apply the corner to the toe kick for a clean finish (repeat as necessary on all exposed corners).



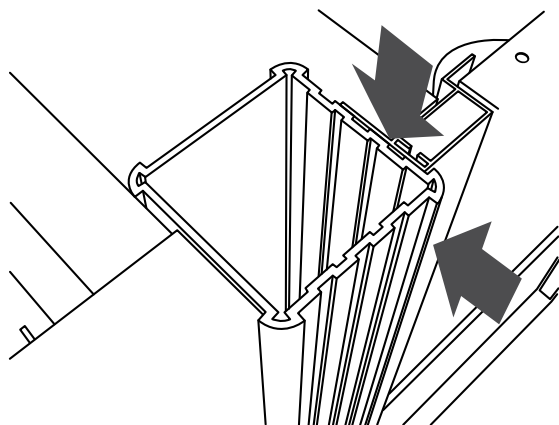
# INSTALLATION: COLUMN FILLERS

## CABINET INSTALLATION - COLUMN FILLERS

Column fillers are 3" standard. They are an extruded design, featuring 2 decorative styles — smooth or fluted. The columns extend from the top of the face frame, down to the floor. It is recommended that if a finished end panel is being used, install the columns to the end panel first, then attach the end panel/post assembly to the end cabinet.



1. Rotate/flip the column so that the desired design is exposed. Take consideration if the corner is to be exposed.



2. Align the top edge of the column with the top edge of the cabinet frame. Slide the column rearward against the face of the cabinet.

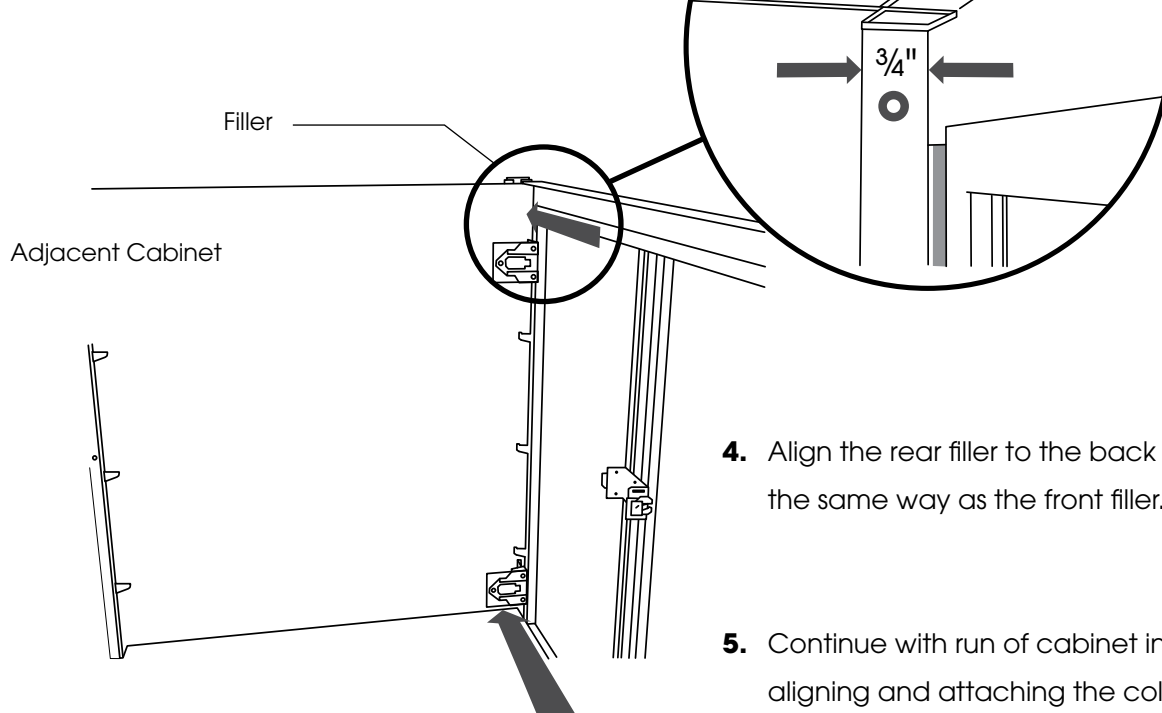
**NOTE:** the column will be sitting up, off of the ground.

# INSTALLATION: COLUMN FILLERS

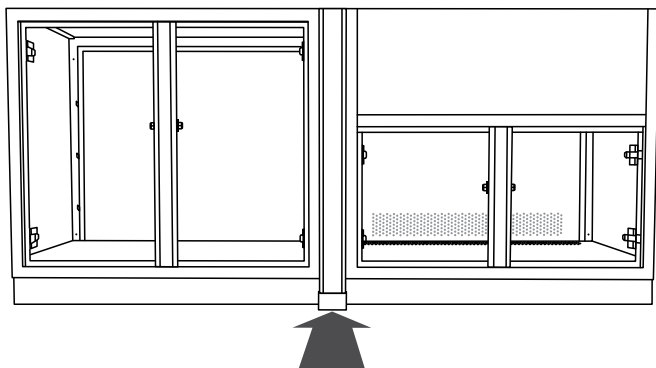
## CABINET INSTALLATION - COLUMN FILLERS (continued)

3. Install the column using two (2)  $\frac{3}{4}$ " #8 screws to the adjacent cabinet. Predrilling may help in the attachment. If permitted, screw location should be within  $\frac{3}{4}$ " of the inside face. This will join the components through the structural face frame.

**NOTE:** Predrilling is recommended.



4. Align the rear filler to the back panel and install the same way as the front filler. (If applicable)
5. Continue with run of cabinet installation by aligning and attaching the column to the next cabinet in the line.

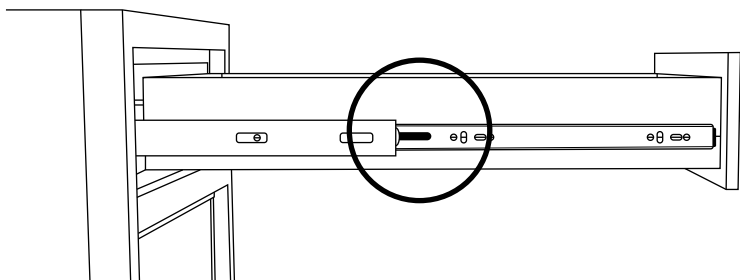


6. After assembly and toe kick installation, clip the base cover of the column on to the bottom.

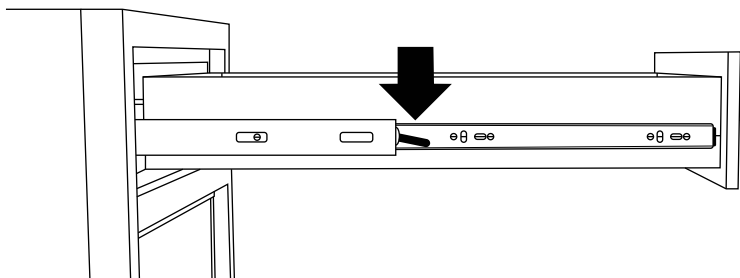
# INSTALLATION: INSERT CABINETS

## REMOVE DRAWER/SLIDE-OUT COMPONENT & DOORS

Removal of cabinet drawers allows for ease of moving, assembly and installation. Be sure to store drawers away from the work site to prevent damage. When reinstalling, be sure to return them to their original location.



1. Locate the drawer release levers on both sides of the drawer.

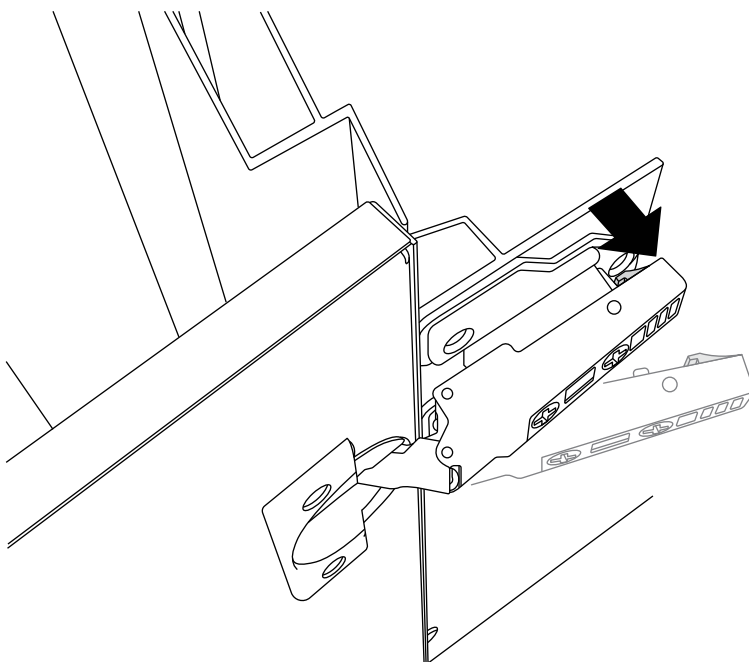


2. Depress both drawer release levers at the same time and hold.

**NOTE:** Down on left, up on right.

Removal of cabinet doors allows for ease of moving, assembly and installation. Be sure to store doors away from the work site to prevent damage.

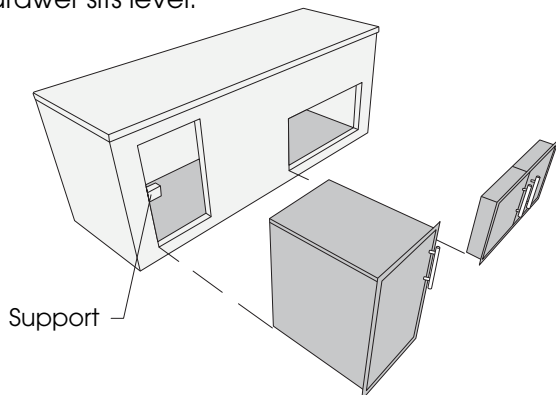
1. Depress release found at the rear of the hinge assembly.
2. Rotate from rear out and away to remove.



# INSTALLATION: INSERT CABINETS

## STANDARD INSTALLATION

**NOTE:** It is recommended that you provide a secure surface for the rear of the drawer/slideout components to rest on. This will help support the drawer's weight, along with the weight of its contents. This will ensure that your drawer sits level.



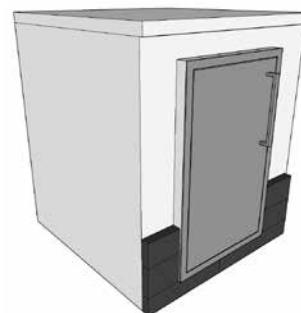
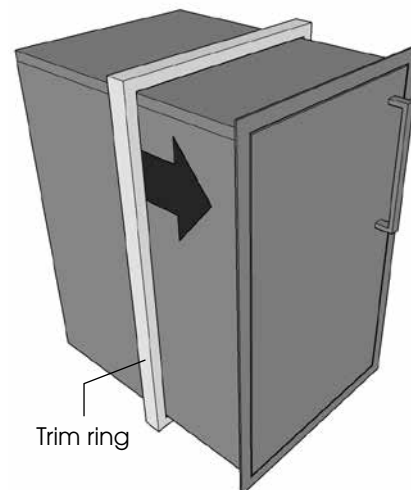
1. Slide in and fasten the unit securely into the island enclosure using appropriate hardware (not included) for your application through the pre-located attachment points in the sides of the cabinet. If your specific island design does not allow for the use of the predetermined holes, your own attachment points may be added as required.

## TRIM RING INSTALLATION

When using a cultured stone or veneer a trim ring is available to enhance the fit and finish of the island install.

1. Cabinets should be installed prior to stonework.
2. Slide the trim ring onto the cabinet. Then, slide in and fasten the unit securely into the island enclosure using appropriate hardware (not included) for your application through the pre-located attachment points in the sides of the cabinet.

**Note:** If your specific island design does not allow for the use of the predetermined holes, your own attachment points may be added as required.



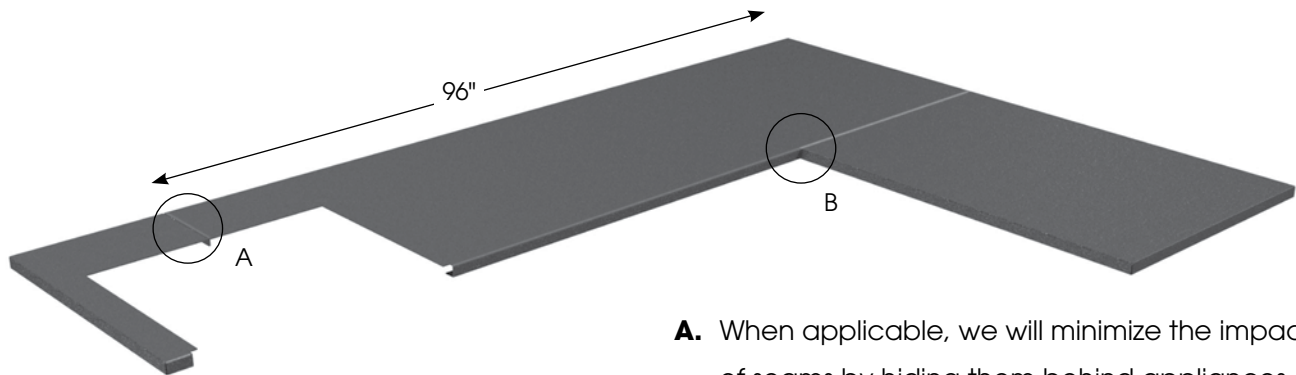
## DRAWER & SLIDE-OUT INSTALLATION

Reattach the drawer by extending the drawer slides out completely, then align the drawer onto the slides. Slide each side together until an audible click is heard. Test that the slides are locked by cycling the drawer in and out.

# INSTALLATION: ALUMINUM COUNTERTOP

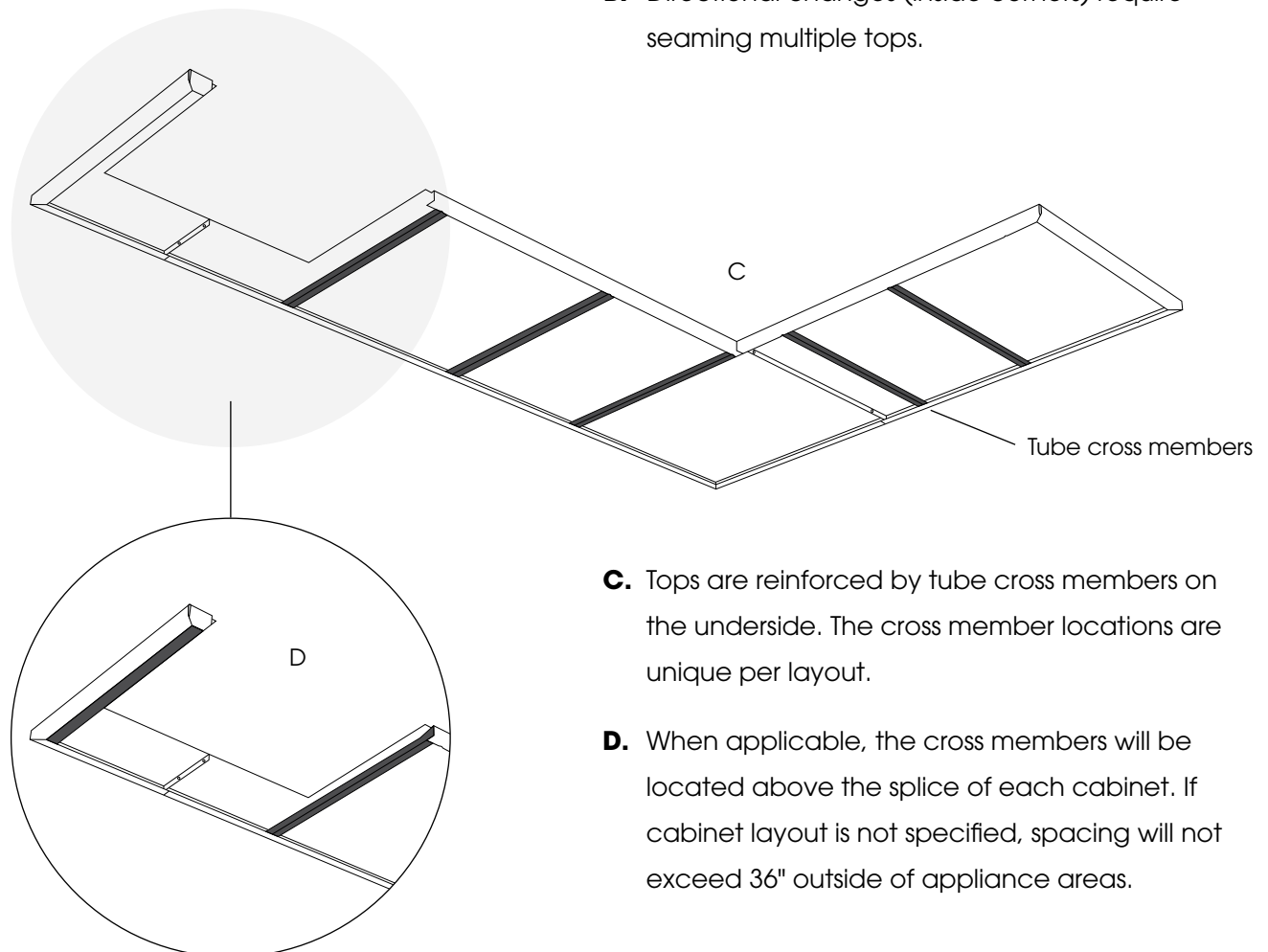
## ALUMINUM COUNTERTOP CONSTRUCTION

Wolf Home Products offers made-to-order aluminum countertops specifically for Wolf Endurance Outdoor Cabinetry. All tops are of .090 gauge construction featuring premium exterior grade powder coated finishes. Slabs can run up to 96" long without a seam.



**A.** When applicable, we will minimize the impact of seams by hiding them behind appliances.

**B.** Directional changes (inside corners) require seaming multiple tops.



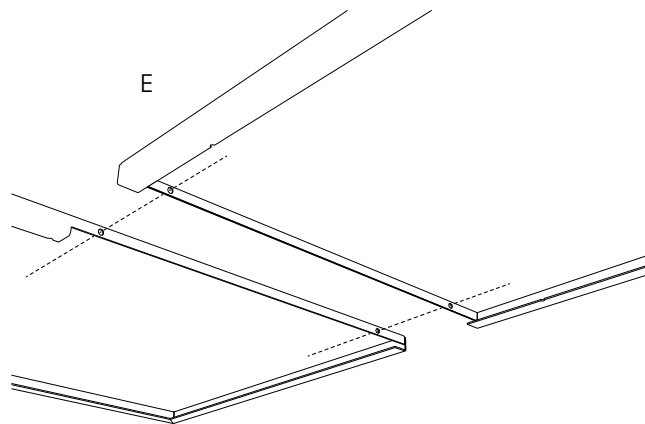
**C.** Tops are reinforced by tube cross members on the underside. The cross member locations are unique per layout.

**D.** When applicable, the cross members will be located above the splice of each cabinet. If cabinet layout is not specified, spacing will not exceed 36" outside of appliance areas.

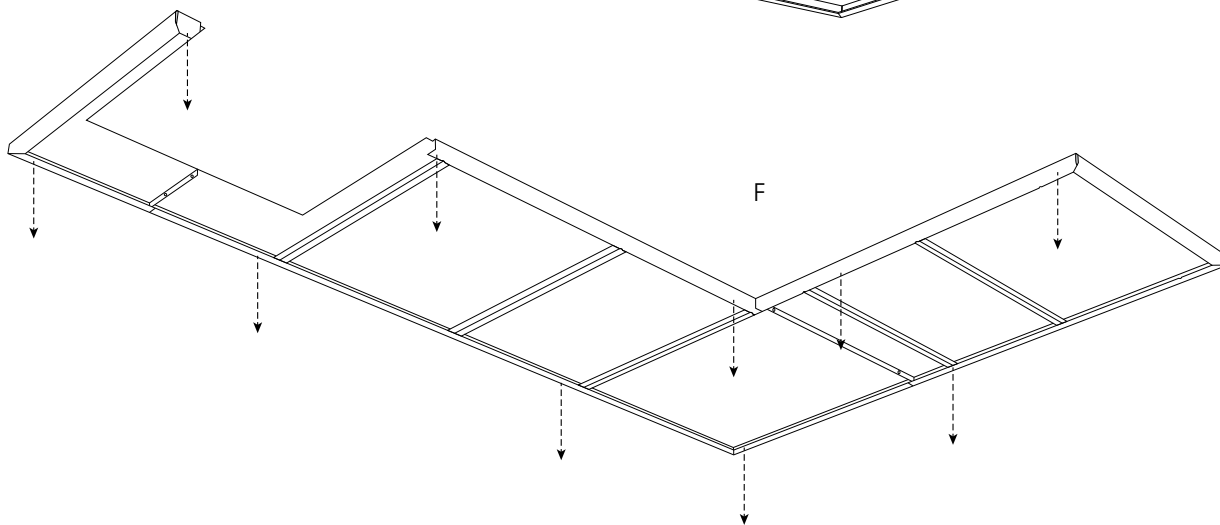
# INSTALLATION: ALUMINUM COUNTERTOP

## ALUMINUM COUNTERTOP CONSTRUCTION (continued)

**E.** Splices are joined by bolting the two slabs together. Hardware is provided for the installer to fasten through the pre-located holes in the aluminum.

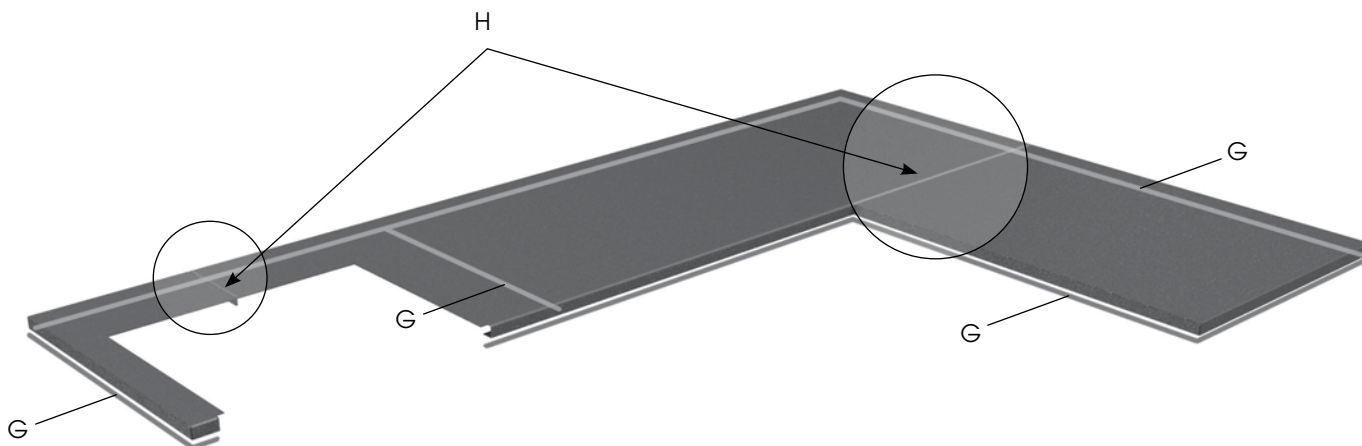


**F.** Tops are secured to the cabinets by screwing (metal screws) the cabinets to the return along the edge on the underside of the top.



**G.** Installer should seal the joint between the top and the cabinetry. This can be done either by sealant or gasket.

**H.** Installer should also seal the joints between individual top sections.



# WOLF ENDURANCE | LIMITED LIFETIME WARRANTY

Wolf Endurance Outdoor Cabinetry is manufactured for Wolf Home Products by Challenger Designs, LLC and referred to below as “the Manufacturer.” The manufacturer warrants to the consumer purchaser, a limited lifetime manufacturers guarantee, that products shall be free from defects in manufactured materials and workmanship under normal use.

This warranty is effective from the date of original residential installation for as long as the residence is owned and occupied by the original consumer purchaser.

## GENERAL WARRANTY GUIDELINES

Should the product fail during applicable warranty period due to defects in manufactured materials or workmanship under normal use and in compliance with our cleaning and care instructions, the Manufacturer, at its own discretion, will provide the parts necessary to repair or replace the defective products. This warranty is nontransferable and applies to original retail purchaser only.

The warranty does not cover products that are misused, abused, mishandled, improperly cleaned, improperly installed, improperly stored, changed, modified, act of God, or damages occurring from normal wear and tear. This warranty is not valid for products used for any purpose other than the purpose for which they were originally intended. This warranty does not cover the cost of installation, removal, subsequent damage or transportation of defective product, regardless of whether the work was performed by a contractor, service company, or the consumer.

Product finishes are premium exterior grade finishes, made to withstand harsh external conditions. Over time color changes may result from exposure to light and other elements that are part of the aging process. These material variations and changes are not covered by this warranty. The Manufacturer warrants to the original consumer purchaser that its finishes are free from defect, including flaking, peeling, cracking, or massive discoloration (<5 Delta E) for a period of 3 years under normal use. The Manufacturer will pay freight costs for the first year and 50% freight costs for years 2 to 3 in the Continental U.S. and Canada.

The Manufacturer reserves the right to provide parts for repair or replacement of the defective parts and substitute any discontinued product with the most similar product in styling, finish and color available at the time the claim is submitted without the obligation to provide product to match items previously manufactured.

All parts not produced by The Manufacturer are warranted for the period provided by the original manufacturer. These parts include most accessories, such as hinges, glides, pull handles, casters, adjustable legs, etc.

This warranty is the exclusive warranty of the Manufacturer and is in lieu of all other warranties, expressed or implied. In no event shall the Manufacturer be liable for consequential, indirect or incidental damages resulting from the installation, use or failure of the product. The Manufacturer reserves the right to change or modify this warranty at any time.

Some states do not allow the exclusion or limitation of incidental or consequential damages, so the above limitations or exclusions may not apply to you. This warranty gives you specific legal rights and you may also have other rights that vary from state to state.

To submit a claim under this warranty, contact:

**Wolf Endurance Outdoor Cabinetry - Claims**  
**c/o Challenger Designs, LLC**  
**24785 US 6 East**  
**P.O. Box 67**  
**Nappanee, IN 46550**  
**Email: [warranty@challengerdesignsllc.com](mailto:warranty@challengerdesignsllc.com)**



Wolf Home Products® is an innovator in the building products industry. We've cultivated more than 175 years of business experience into a total satisfaction guarantee. With our vast inventory of kitchen and bath, outdoor living and building products, we deliver your orders in a fraction of the time and ensure you get unparalleled value — when and where you need it. Wolf stands behind our service because, above all, Wolf stands behind you.



Kitchen & Bath



Outdoor Living



Building Products

[wolfhomeproducts.com](http://wolfhomeproducts.com) | © 2019 Wolf Home Products. All Rights Reserved.

All photos and colors are representative of product. Please review an actual product sample with your dealer before making your final selection.

